

Integration

Mobilise your business applications through direct integration into PageOne. Whether you want to add SMS into a new application or your existing infrastructure, PageOne will work closely with you to ensure you get the support and documentation you need to get your applications up and running quickly.

Using the PageOne SOAP API, you will have access to a suite of message distribution and management services within a secure environment.

SOAP is platform neutral and supports the following programming environments: .NET, C#, C++, PHP, Perl, Java, VB6, ASP, Delphi and VC++.

PageOne offer a comprehensive range of mobile messaging facilities capable of high-capacity, volume messaging. Advanced features allow greater control over messaging with real-time access to manage message routing and distribution. The PageOne SOAP API supports messaging to all UK-wide paging and international GSM networks.

Benefits:

- Seamless integration between your applications and the PageOne messaging gateway
- Platform and language independent, enabling communication between different operating systems, technologies and programming languages
- In-house developer and technical support
- Support of high volume messaging
- Cost effective integration to your applications

Features:

- Authenticate a secure messaging session
- Send messages to mobiles, pagers and email direct from your business applications
- View delivery reports and 2-way SMS replies
- Manage and populate stored distribution lists
- User friendly development tools and sample code to allow developers a quick start in implementing their SMS enabled applications



Contact Us

To sign up for secure SOAP connectivity or one of our other integration options, contact us today on **0844 811 0070** or email **connect@pageone.co.uk** to speak to one of our messaging specialists.

Integration

Other integration options

PageOne also provide a number of other connectivity options which offer direct integration with PageOne's messaging platform. Each option is designed to suit your specific needs and environment including:

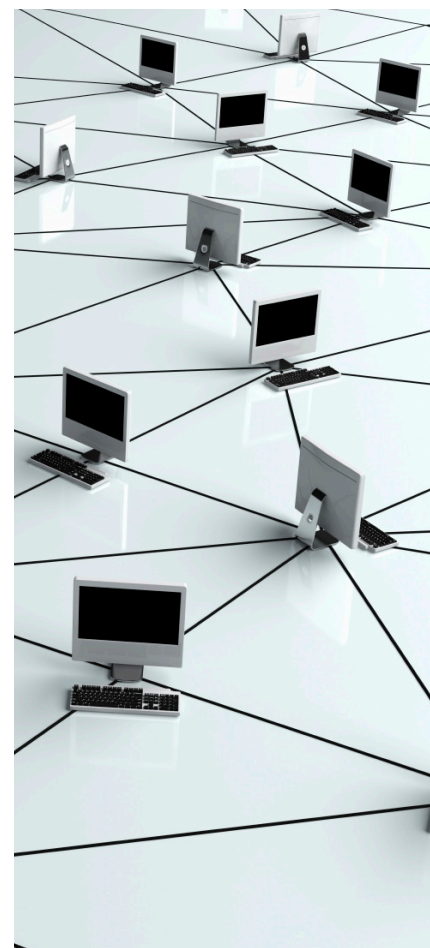
SMTP (Email to SMS). Users are allocated a specific domain name by PageOne allowing them to send messages to mobiles direct from their standard email client.

HTTP-Get/Post using Ajax (send only). Simple browser messaging using an AJAX interface. This API allows web developers to embed messaging directly into their web sites.

SMPP (Peer to Peer Messaging). SMPP or "Short Message Peer to Peer" is an open industry standard typically used by organisations with high volume bulk SMS requirements to UK and international GSM Mobiles.

SNPP (Internet connectivity). This protocol offers organisations a simple yet reliable way to send both paging and SMS messages. SNPP operates via a customer's internet connection and enables organisations to send messages to PageOne pagers and to mobile phones (regardless of network) without incurring telephone charges and pager messages.

TAP (Modem-to-Modem connection). One of the first methods of connection introduced by PageOne, TAP has maintained its status as a reliable and easy to set up protocol. It offers a simple mechanism, that is suitable for the daily requirements of high volume customers.



Contact Us

To sign up for secure SOAP connectivity or one of our other integration options, contact us today on **0844 811 0070** or email **connect@pageone.co.uk** to speak to one of our messaging specialists.